

**Peace Liard  
Regional Juried  
Art Exhibit  
of 2020**

**2021**





RJAE  
Distinguished  
Conceptual Award  
"LOST"  
Welded Sculpture

**Karl  
Mattson**

Rolla, BC

**Artist Statement:**

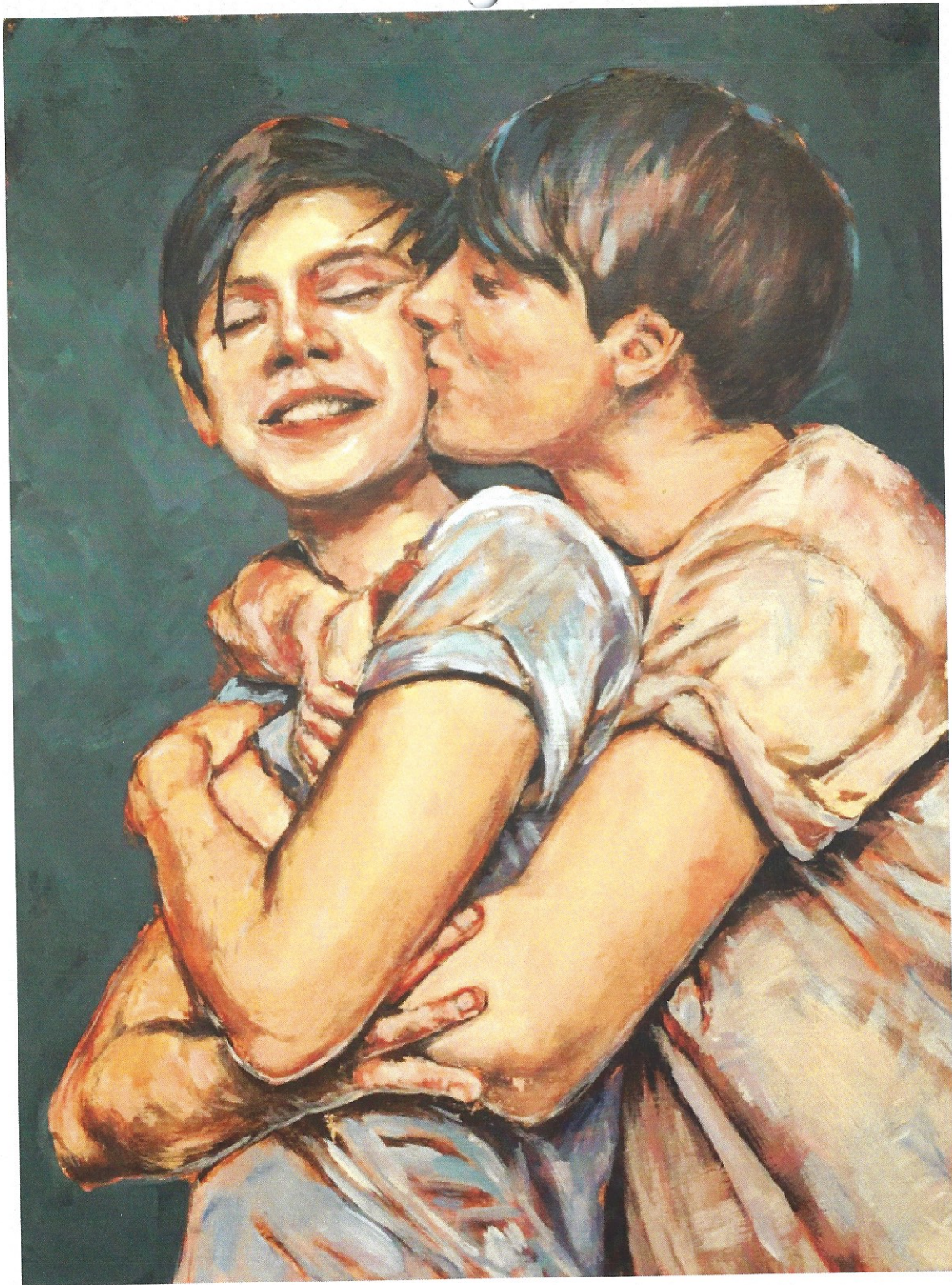
"Lost" is a 12 foot-tall welded sculpture made entirely from salvaged materials from Mattson's farm and industry scrap yards. A wood stove doubles as a diving bell, and she has air supply tanks and communication devices. Her head (the bell) has been lit on fire at a few different exhibit locations, with fire marshal approval, with crowd interaction. Each time the sculpture is lit on fire, it becomes a new work of art. The work ties in with other recent works of mine, including "LIFE PODS" ("Life Pods" – beautifully awkward objects made from found industrial and farm materials that are also survival chambers, equipped with oxygen tanks and communication devices. – Border Crossing Magazine). Like "Life Pods," "Lost" is meant to challenge the viewer with ideas around resource extraction, environmental degradation, and the sometimes bleak vision of humankind's complacent march into a future of uncertainty.

# January

PEACE LIARD REGIONAL JURIED ART EXHIBIT

# 2021

SUNDAY	MONDAY	TUESDAY	WEDNESDAY	THURSDAY	FRIDAY	SATURDAY
					1 NEW YEAR'S DAY	2
3	4	5	6	7	8	9
10	11	12	13 ●	14	15	16
17	18	19	20	21	22	23
24	25	26	27	28 ○	29	30
31						



RJAE  
Chosen Award

“I'M YOURS”

**Amy  
Gothard**

Fort St John, BC

**Artist Statement:**

This piece is an exploration of colour and emotion as I attempt to connect with my subjects and express their experiences.

# February

PEACE LIARD REGIONAL JURIED ART EXHIBIT

# 2021

SUNDAY	MONDAY	TUESDAY	WEDNESDAY	THURSDAY	FRIDAY	SATURDAY
	1	2	3	4	5	6
7	8	9	10	● 11	12	13
14	15 FAMILY DAY	16	17	18	19	20
VALENTINE'S DAY						
21	22	23	24	25	26	○ 27
28						



RJAE  
Chosen Award

“IN THE ROUND”  
Copper

**Isam  
Sharkia**

Fort Nelson, BC

**Artist Statement:**

I work in copper which is easier to cut into straight lines for squares or rectangles. But I really wanted to create something different which is this piece. I am happy to introduce the copper work of Syria to Canadians.

# March

PEACE LIARD REGIONAL JURIED ART EXHIBIT

# 2021

SUNDAY	MONDAY	TUESDAY	WEDNESDAY	THURSDAY	FRIDAY	SATURDAY
	1	2	3	4	5	6
7	8	9	10	11	12	● 13
14	15	16	17	18	19	20
DAYLIGHT SAVING TIME (AB)			ST. PATRICK'S DAY			SPRING EQUINOX
21	22	23	24	25	26	27
○ 28	29	30	31			





RJAE  
Chosen Award

# April

PEACE LIARD REGIONAL JURIED ART EXHIBIT

# 2021

“ELEMENTAL CULTURE”

**Crystal  
Behn-Dettieh**

Fort Nelson, BC

SUNDAY	MONDAY	TUESDAY	WEDNESDAY	THURSDAY	FRIDAY	SATURDAY
				1	2 GOOD FRIDAY	3
4 EASTER SUNDAY	5	6	7	8	9	10
● 11	12	13	14	15	16	17
18	19	20	21	22 EARTH DAY	23	24
25	○ 26	27	28	29	30	



RJAE  
Chosen Award

“sustain”

**mary  
mottishaw**

Dawson Creek, BC

**Artist Statement:**

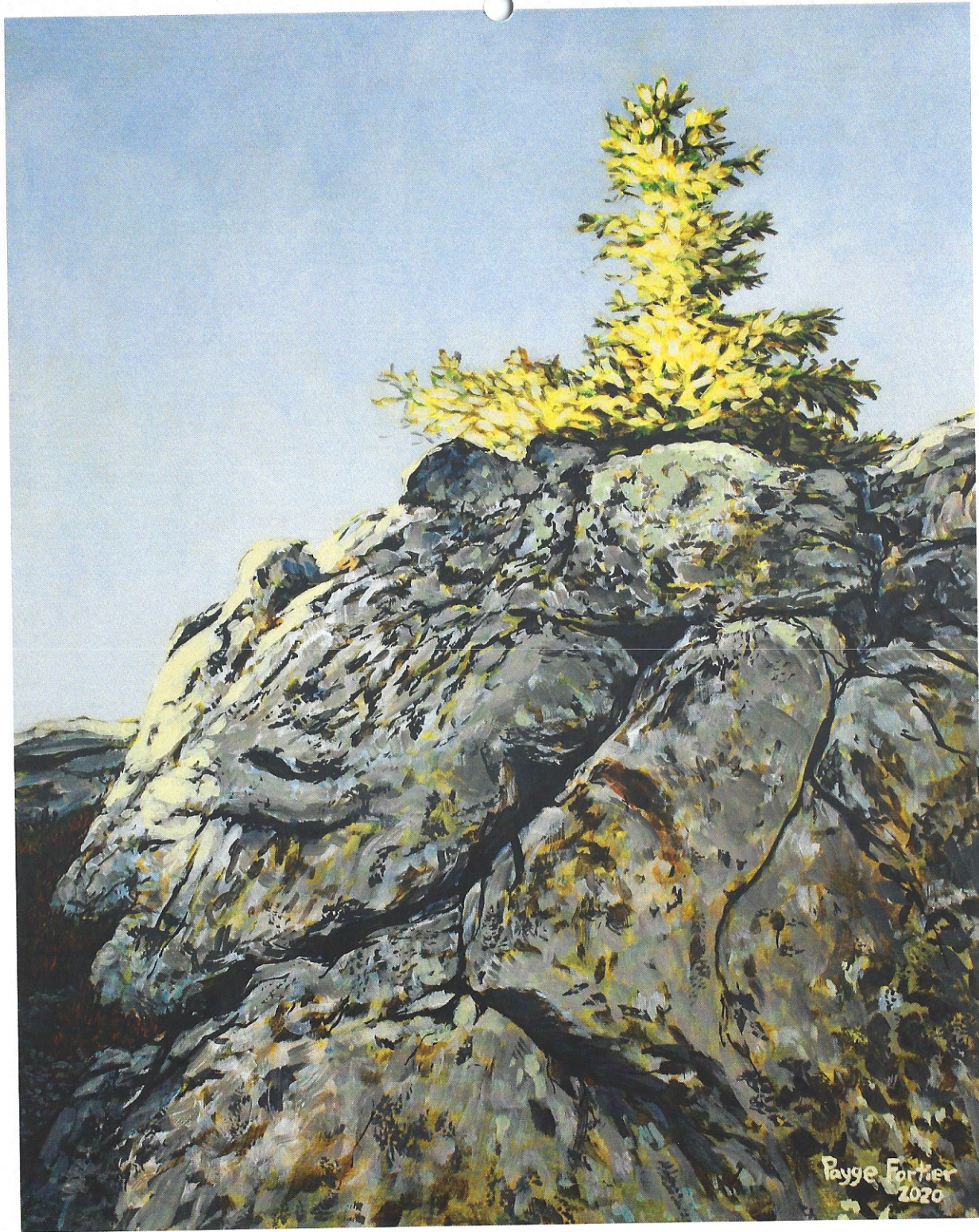
I am questioning my relationship to the land (environment, land). If I consider it a living being, then how do I respond to it? We have an enormous impact on each other! Seeing the back of the figure is an intentional device asking the viewer to look with me; we face the same way, together. I used the grid as a way to place the piece in my local landscape, where the Peace River Block is mapped into one-mile squares. For “sustain” the banks of the river are collaged with bits of copied articles from the local newspaper reporting both drought and flood in Dawson Creek and the surrounding area. Both have been experienced in the last 10 years. Hand stitching is used as both a personal touch and to denote the passage of time.

# May

PEACE LIARD REGIONAL JURIED ART EXHIBIT

# 2021

SUNDAY	MONDAY	TUESDAY	WEDNESDAY	THURSDAY	FRIDAY	SATURDAY
						1
2	3	4	5	6	7	8
9	10	● 11	12	13	14	15
MOTHER'S DAY						
16	17	18	19	20	21	22
23	24 VICTORIA DAY	25	○ 26	27	28	29
30	31					



RJAE  
Chosen Award

“SENTINEL”

**Payge  
Fortier**

Dawson Creek, BC

**Artist Statement:**

My way of communicating with the landscape visually is through vibrant colours, strong lines, and contrast. I am most inspired while being in a natural environment. I create these works to share through my own eyes, the diverse and sometimes unnoticed beauty we live amongst. A weathered stump or gnarly little tree standing strong in constant battle with their harsh environments. With this goal in mind, I hope to convey the importance of our landscape and inspire its preservation for everyone to benefit from.

# June

PEACE LIARD REGIONAL JURIED ART EXHIBIT

# 2021

SUNDAY	MONDAY	TUESDAY	WEDNESDAY	THURSDAY	FRIDAY	SATURDAY
		1	2	3	4	5
6	7	8	9	● 10	11	12
13	14	15	16	17	18	19
20	21	22	23	○ 24	25	26
FATHER'S DAY SUMMER SOLSTICE						
27	28	29	30			



RJAE  
Chosen Award

# July

PEACE LIARD REGIONAL JURIED ART EXHIBIT

# 2021

“wâspison  
(he/she is laced  
up in a mossbag)”

**Kristy  
Auger**

Fort St John, BC

**Artist Statement:**

For most of my life I didn't really know anything about my culture and language. By my late twenties I made a promise to myself that I would be fluent in my language and know my cultural teachings by the time I had my first child. I wanted my child to have a wâspison/mossbag (pronounced woss-pissuhn) because that mossbag represents a connection to my ancestors and cultural teachings. I was 27 when nisikos (my mother-in-law) taught me how to sew a mossbag. A couple of years later I made one for my son right before he was born. I had literally finished sewing it when my water broke. He was a tiny newborn when my mother-in-law showed my partner and I how to put our son in the mossbag and we used it almost daily until he grew out of it before he was eight months old. One time I even brought his mossbag to the airport. We were waiting for our layover and Z was extremely tired – he needed to nap. I pulled out his mossbag, and we began to put him in, and he started to whine. As we laced it, then pulled on the string to tighten it – I could feel people looking at us maybe unsure of what we were doing to our baby. But as soon as it was tightened up he fell fast asleep – as he always did. I also put a little song lyric in the piece. It says nipêpîm kisâkihîtin, kisâkihîtin mistahi. My baby, you I love, You I love, very much. Today I am not “fluent” in my language. I am still learning more all the time about my culture. Now our baby son joins us on our journey of learning. Each time we make even the tiniest step of growth it is a time to celebrate and be content on our path.

SUNDAY	MONDAY	TUESDAY	WEDNESDAY	THURSDAY	FRIDAY	SATURDAY
				1 CANADA DAY	2	3
4	5	6	7	8	9	10
11	12	13	14	15	16	17
18	19	20	21	22	23	24
25	26	27	28	29	30	31





RJAE  
Distinguished  
Representational Award  
"ANDRENA'S  
THISTLE"

## Caily Oldershaw

Pouce Coupe, BC

**Artist Statement:**

Local wild Andrena bee, also known as a mining bee, collects pollen from a Peace Country thistle beginning to blossom.

# August

PEACE LIARD REGIONAL JURIED ART EXHIBIT

# 2021

SUNDAY	MONDAY	TUESDAY	WEDNESDAY	THURSDAY	FRIDAY	SATURDAY
1	2 CIVIC HOLIDAY	3	4	5	6	7
● 8	9	10	11	12	13	14
15	16	17	18	19	20	21
○ 22	23	24	25	26	27	28
29	30	31				



R. Shaw 7/19

RJAE  
Chosen Award

# September

PEACE LIARD REGIONAL JURIED ART EXHIBIT

# 2021

“SEPTEMBER SKY”

**Peter  
Shaw**

Dawson Creek, BC

SUNDAY	MONDAY	TUESDAY	WEDNESDAY	THURSDAY	FRIDAY	SATURDAY
			1	2	3	4
5	6 ● LABOUR DAY	7	8	9	10	11
12 GRANDPARENT'S DAY	13	14	15	16	17	18
19	20 ○	21	22 FALL EQUINOX	23	24	25
26	27	28	29	30		



RJAE  
Distinguished  
Three Dimensional Award  
"STOP"

**Haley  
Bassett**

Groundbirch, BC

**Artist Statement:**

"Stop" is comprised of Himalayan blackberry canes and steel wire. I chose to work with blackberry for the aggressive and invasive qualities of the plant. The steel wire was selected for its malleability and cool, contrasting colour. The piece is a play on power dynamics. Each cane is bent nearly to its breaking point, yet contains an enormous amount of stored potential energy, representing a latent threat. The wire is both the mechanism that binds the blackberry, as well as what makes it so dangerous.

# October

PEACE LIARD REGIONAL JURIED ART EXHIBIT

# 2021

SUNDAY	MONDAY	TUESDAY	WEDNESDAY	THURSDAY	FRIDAY	SATURDAY
					1	2
3	4	5	● 6	7	8	9
10	11 THANKSGIVING DAY	12	13	14	15	16
17	18	19	○ 20	21	22	23
24	25	26	27	28	29	30
31 HALLOWEEN						



RJAE  
Chosen Award

# November

PEACE LIARD REGIONAL JURIED ART EXHIBIT

# 2021

“SOLASTALGIA SERIES”

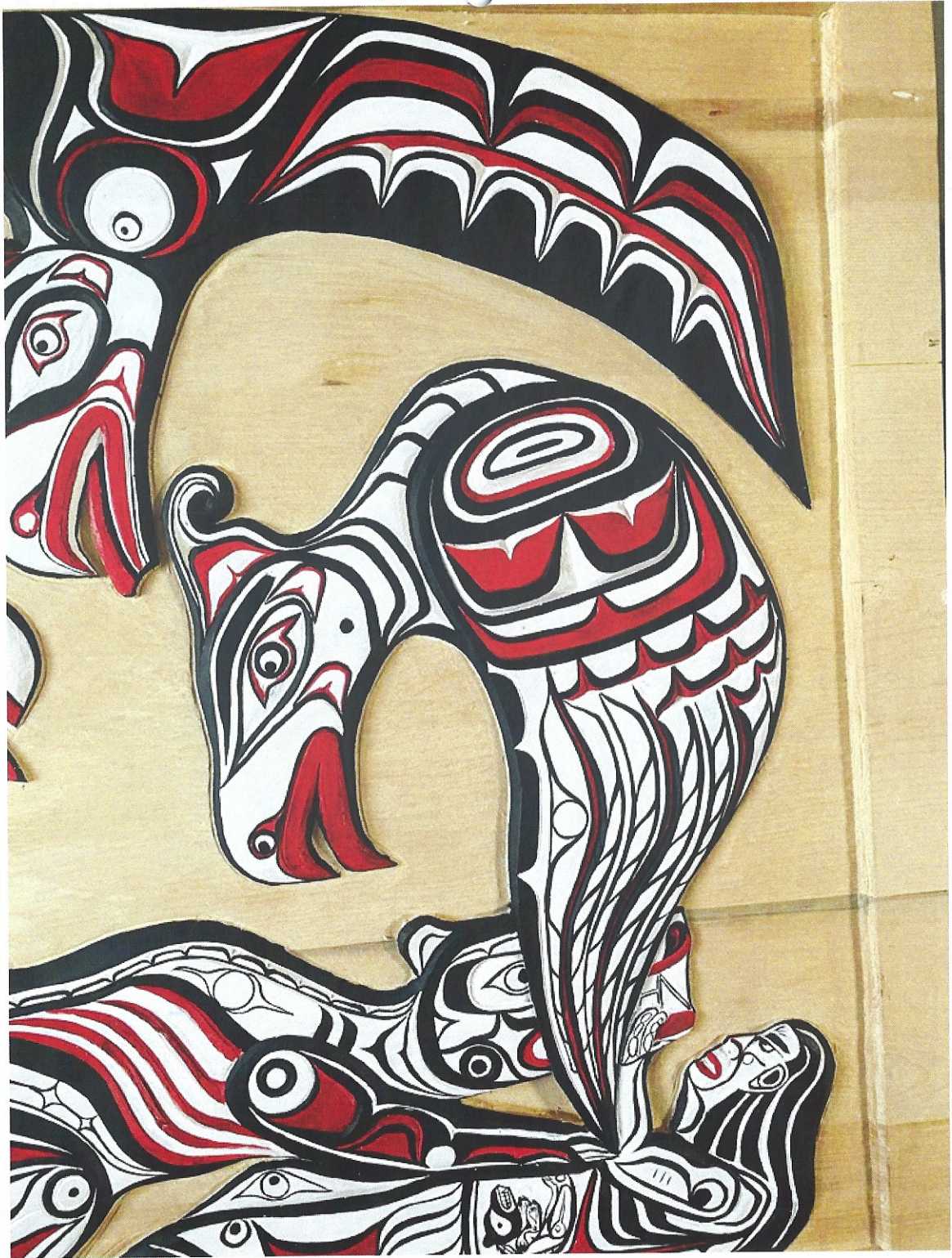
**Barbara  
Swail**

Dawson Creek, BC

**Artist Statement:**

In SOLASTALGIA I am looking at changes to the landscape and environs of my neighbourhood. Changes that leave me sad and nostalgic for the way it was. Changes that have been swift and intense. Change is inevitable of course. But some change is more difficult to accept, such as the loss of the star-studded night skies, the industrialization of the landscape, the sudden appearance of acres of gravel and chain link fence, the disappearance of narrow country roads and wooded wind breaks, the absence of animals, and quiet. In ecological terms, these are all evidence of environmental degradations. In SOLASTALGIA, I have focused on the emotional experience of loss of place.

SUNDAY	MONDAY	TUESDAY	WEDNESDAY	THURSDAY	FRIDAY	SATURDAY
	1	2	3	4	5	6
7	8	9	10	11 REMEMBRANCE DAY	12	13
14 BACK TO STANDARD TIME (AB)	15	16	17	18	19	20
21	22	23	24	25	26	27
28	29	30				





RJAE  
Chosen Award

# December

PEACE LIARD REGIONAL JURIED ART EXHIBIT

2021

“SAVIOURS SENT  
FROM ABOVE”  
(detail)

**Curtis Henry  
Dickie**

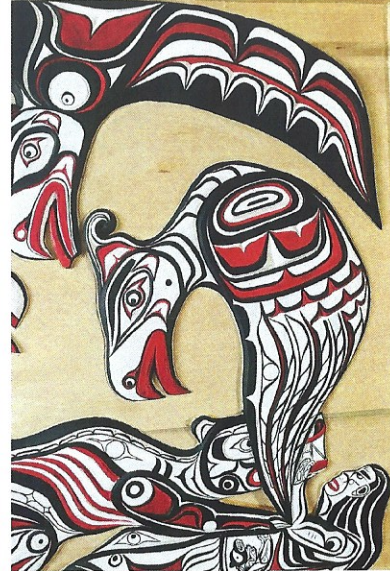
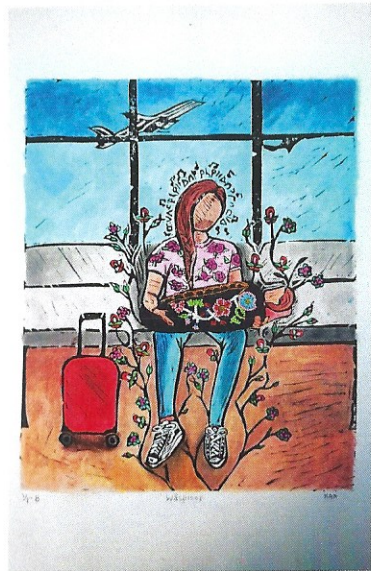
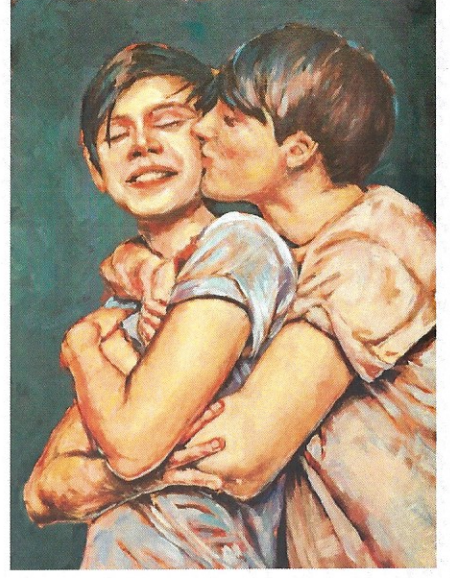
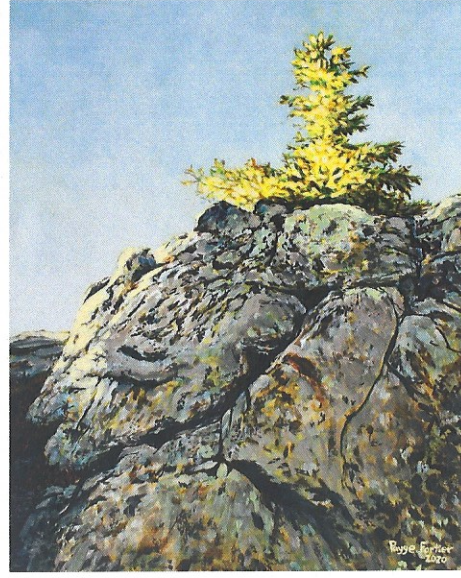
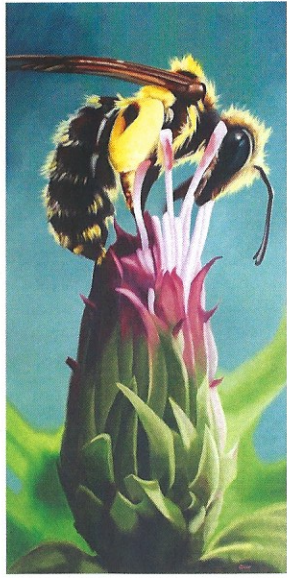
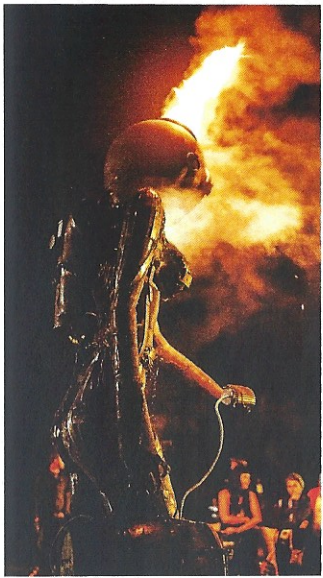
Fort Nelson, BC

**Artist Statement:**

Saviours – the Thunderbirds, Ravens, and the little ones inside the woman, and the little one in the Thunderbird in mid-transformation.

Years ago I had a strange dream. I was hunting with my dad, and we were looking down a hill. We saw two moose fighting, then when I looked away and looked back again the fight evolved and had other giant Thunderbirds in mid-transformation, bears, wolves and other animals in a fury of feathers and fur. This piece is a reflection of that dream. Starting off in the bottom right corner, a woman, with a baby bear cub inside her, or a baby with a bear spirit inside her. The woman is pinned down by a large mother grizzly bear. Directly to the mother grizzly's left is her cub. On the mother grizzly's head is a Thunderbird, and on her back is another Thunderbird in mid-transformation, transforming from a human figure into a Thunderbird. This Thunderbird has a baby Thunderbird inside her as well. The grizzly cub is behind his mother facing off against the other birds on the left side of the panel. Throughout the panel you can see the birds coming to save the woman from the bears. Throughout the panel you can see eyes on the birds which is depicting the dream, as in the dream the animals were evolving from eyes of the other animal. Some tribes believed in supernatural beings sent from above, and Thunderbird is a common legend in tribes throughout North America. Some tribes believed in reincarnation and a long time ago native people could transform into other animals or beings from above.

SUNDAY	MONDAY	TUESDAY	WEDNESDAY	THURSDAY	FRIDAY	SATURDAY
			1	2	3	4
5	6	7	8	9	10	11
12	13	14	15	16	17	18
19	20	21	22	23	24	25
26	27	28	29	30	31	
BOXING DAY						CHRISTMAS DAY



# January

PEACE LIARD REGIONAL JURIED ART EXHIBIT

# 2022

SUNDAY	MONDAY	TUESDAY	WEDNESDAY	THURSDAY	FRIDAY	SATURDAY
						1 NEW YEAR'S DAY
● 2	3	4	5	6	7	8
9	10	11	12	13	14	15
16	○ 17	18	19	20	21	22
23	24	25	26	27	28	29
30	31					

# 2022

JANUARY	SUN	MON	TUE	WED	THU	FRI	SAT
							1
2	3	4	5	6	7	8	
9	10	11	12	13	14	15	
16	17	18	19	20	21	22	
23 30	24 31	25	26	27	28	29	

FEBRUARY	SUN	MON	TUE	WED	THU	FRI	SAT
		1	2	3	4	5	
6	7	8	9	10	11	12	
13	14	15	16	17	18	19	
20	21	22	23	24	25	26	
27	28						

MARCH	SUN	MON	TUE	WED	THU	FRI	SAT
			1	2	3	4	5
6	7	8	9	10	11	12	
13	14	15	16	17	18	19	
20	21	22	23	24	25	26	
27	28	29	30	31			

APRIL	SUN	MON	TUE	WED	THU	FRI	SAT
						1	2
3	4	5	6	7	8	9	
10	11	12	13	14	15	16	
17	18	19	20	21	22	23	
24	25	26	27	28	29	30	

MAY	SUN	MON	TUE	WED	THU	FRI	SAT
1	2	3	4	5	6	7	
8	9	10	11	12	13	14	
15	16	17	18	19	20	21	
22	23	24	25	26	27	28	
29	30	31					

JUNE	SUN	MON	TUE	WED	THU	FRI	SAT
			1	2	3	4	
5	6	7	8	9	10	11	
12	13	14	15	16	17	18	
19	20	21	22	23	24	25	
26	27	28	29	30			

JULY	SUN	MON	TUE	WED	THU	FRI	SAT
						1	2
3	4	5	6	7	8	9	
10	11	12	13	14	15	16	
17	18	19	20	21	22	23	
24 31	25	26	27	28	29	30	

AUGUST	SUN	MON	TUE	WED	THU	FRI	SAT
	1	2	3	4	5	6	
7	8	9	10	11	12	13	
14	15	16	17	18	19	20	
21	22	23	24	25	26	27	
28	29	30	31				

SEPTEMBER	SUN	MON	TUE	WED	THU	FRI	SAT
					1	2	3
4	5	6	7	8	9	10	
11	12	13	14	15	16	17	
18	19	20	21	22	23	24	
25	26	27	28	29	30		

OCTOBER	SUN	MON	TUE	WED	THU	FRI	SAT
							1
2	3	4	5	6	7	8	
9	10	11	12	13	14	15	
16	17	18	19	20	21	22	
23 30	24 31	25	26	27	28	29	

NOVEMBER	SUN	MON	TUE	WED	THU	FRI	SAT
		1	2	3	4	5	
6	7	8	9	10	11	12	
13	14	15	16	17	18	19	
20	21	22	23	24	25	26	
27	28	29	30				

DECEMBER	SUN	MON	TUE	WED	THU	FRI	SAT
					1	2	3
4	5	6	7	8	9	10	
11	12	13	14	15	16	17	
18	19	20	21	22	23	24	
25	26	27	28	29	30	31	



**PEACE LIARD**  
REGIONAL ARTS COUNCIL

The Peace Liard Regional Arts Council serves six regional arts councils in the Peace Liard region of northeastern British Columbia. Our mandate is to raise awareness and to support the development and acceptance of arts, culture and heritage, both on a personal and community level, in the Peace Region.

### A Few of Our Programs and Resources

#### Regional Juried Art Exhibition (RJAE)

Held annually at one of the six PLRAC member locations, the RJAE provides an opportunity for regional artists to exhibit their work throughout the Peace River and Northern Rockies regions. Each year, a piece of artwork is added to our Permanent Collection. (Every spring)

#### Wild Words North

Wild Words North provides northeast BC an opportunity to enjoy the rich writing talent that exists in the region and beyond. With presentations, panel discussions, workshops, and readings as well as an exhibit of art inspired by the festival's feature writers, this annual festival is enjoyed by all community members. (Every fall)

The PLRAC thanks Meghan Hunter-Gauthier, Prince George, BC and Kim Stewart, Kamloops, BC for serving as the 2020 RJAE Adjudicators.

### COMMUNITY EVENTS IN THE REGION

Our Facebook page and our website keep members up-to-date on the many community events that take place throughout our region each year.

### ARTS COUNCILS IN THE REGION

#### Chetwynd Community Arts Council

President: Tiffanee Griffiths

[www.facebook.com/ChetwyndCommunityArtsCouncil](http://www.facebook.com/ChetwyndCommunityArtsCouncil)

[ChetwyndCommunityArtsCouncil](http://ChetwyndCommunityArtsCouncil)

#### Fort St John Community Arts Council

President: Rosemary Landry

[www.fsjarts.org](http://www.fsjarts.org)

#### Hudson's Hope Community Arts Council

Contact: [dkane@pris.ca](mailto:dkane@pris.ca)

#### Northern Rockies Arts Council

Contact: Seanah Roper

[seanah.roper@hotmail.com](mailto:seanah.roper@hotmail.com)

#### South Peace Community Arts Council

Coordinator: Melissa Klassen

[southpeacearts@gmail.com](mailto:southpeacearts@gmail.com)

#### Tumbler Ridge Community Arts Council

President: Erin Wanvig

[erinwanvig@gmail.com](mailto:erinwanvig@gmail.com)

#### Peace Liard Regional Arts Council

PLRAC Executive Director: Donna Kane

[dkane@pris.ca](mailto:dkane@pris.ca)

[www.peaceliardarts.org](http://www.peaceliardarts.org)

[www.facebook.com/peaceliardregionalartscouncil](http://www.facebook.com/peaceliardregionalartscouncil)

[peaceliardregionalartscouncil](http://peaceliardregionalartscouncil)

