



SOLASTALGIA

Barbara Swail



SOLASTALGIA

Barbara Swail

AIR Mentorship 2019
Peace Liard Regional Arts Council
Dawson Creek Art Gallery

Library and Archives Canada Cataloguing in Publications

Title: SOLASTALGIA

Artist: Barbara Swail

Exhibition catalogue

ISBN: 978-1-7771430-?

Published by the Dawson Creek Art Gallery

Copyright © Dawson Creek Art Gallery

No part of this publication may be reproduced in any manner whatsoever without written permission except in the case of brief quotations embodied in critical articles or reviews.

Dawson Creek Art Gallery

816 Alaska Avenue

Dawson Creek, BC

Canada, V1G 4T6

Tel: 250-782-2601 • www.dcartgallery.ca

Peace Liard Regional Arts Council

Box 27, Rolla, BC

Canada, VOC 2G0

www.peaceliardarts.org

Editor: Donna Kane

Photography: kit fast

Design: in.detox designs

Typeface used: Myriad Pro

Cover, *Untitled*, Mixed media on paper

Inside front cover, *Untitled*, Mixed media on paper



BRITISH
COLUMBIA



BRITISH COLUMBIA
ARTS COUNCIL
An agency of the Province of British Columbia

SOLASTALGIA

In *SOLASTALGIA* I am looking at changes to the landscape and environs of my neighbourhood. Changes that leave me sad and nostalgic for the way it was. Changes that have been swift and intense.

Change is inevitable of course. But some change is more difficult to accept, such as the diminished visibility of the star-studded night skies, the industrialization of the landscape, the sudden appearance of acres of gravel and chain link fence, the disappearance of narrow country roads and wooded wind breaks, the absence of animals, and quiet.

In ecological terms, these are all evidence of environmental degradations. In *SOLASTALGIA*, I am attempting to express the emotional experience of loss of place.

This feeling of solastalgia is caused by industrial activity that destroys a landscape. When farmers and ranchers arrived more than 100 years ago, Indigenous locals would have experienced the changes to the landscape as brutal, disruptive and disturbing. The oil and gas industry first arrived decades ago but the incursion of the early 2000's occurred in such a rapid and brutal fashion, it has left an indelible imprint on the landscape and in the minds of many.

Images of industrial waste, such as massive piles of shipping skids and other garbage, and images of oil and gas processing facilities, are imposed on photographs of a local river valley in the same way industry has imposed its toxic and overwhelming presence on the regional landscape.

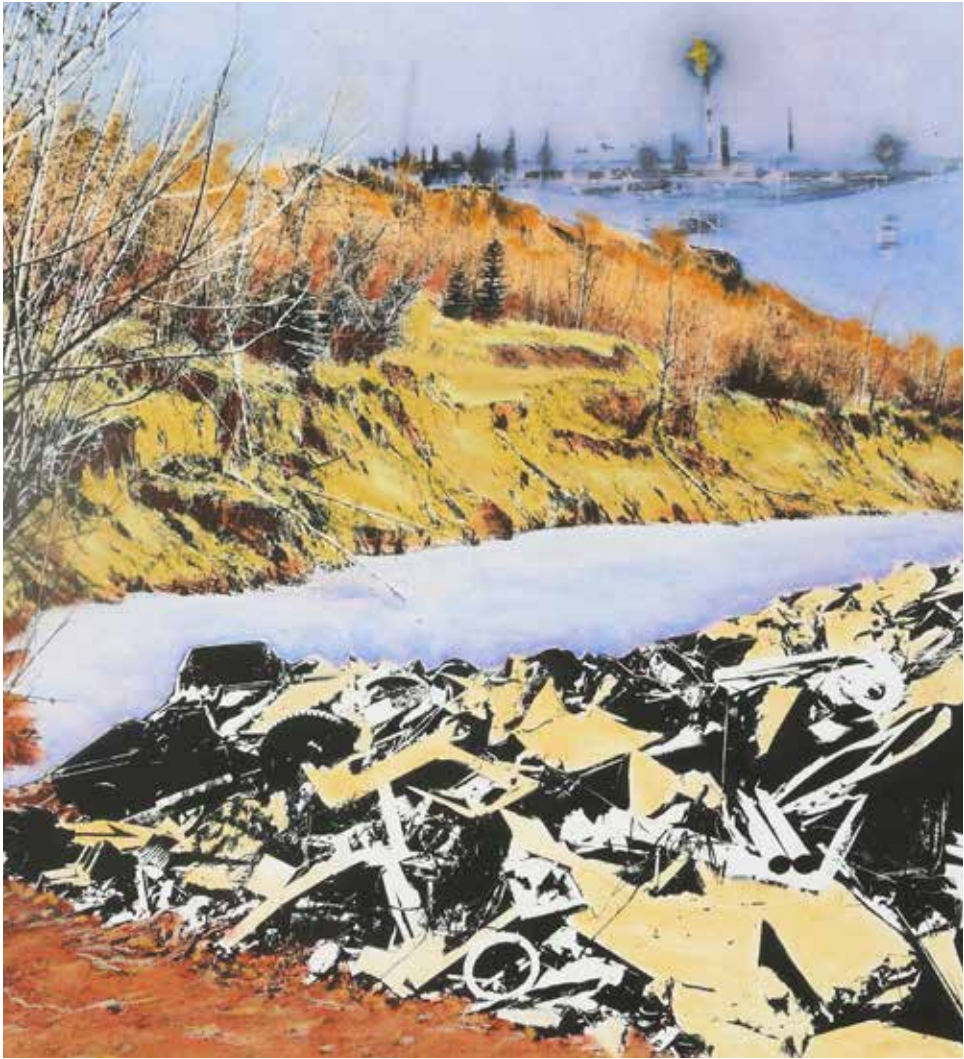
The hand-coloured, black and white photographic images hearken back to the classic art of hand tinting that predated the invention of colour film, just as my images hearken back to the days before the oil and gas industry swept into the region.

Barbara Swail

July 2020



Untitled,
Mixed media on paper
2020



Untitled,
Mixed media on paper
2020





Untitled,
Mixed media on paper
2020

SELECTED EXHIBITIONS AND PROJECTS

- 2019 Toni Onley Artists Project, Island Mountain Arts, Wells, BC
1998 – Present Members' Group Shows, Dawson Creek Art Gallery
2018 – 2020 Peace Liard Regional Arts Council Annual Juried Art Show
RJAЕ Chosen Awards in 2019 and 2020
2017 *Our Living Memory*, Dawson Creek Art Gallery Group Show
2017 *Emergence*, Public Art Collaboration, Peace Liard Regional Arts Council
2015 *Surface Tension*, Group Show, Dawson Creek Art Gallery

WRITING, EDITING, RESEARCH AND ILLUSTRATION

- 2014 *The McDonalds: the lives and legends of a Kaska Dena family*
Allison Tubman, Backyard Productions
2010 *Power Shift: The hope and drama of monumental wind power*
Donald A. Pettit, Peace Photographics Inc.
2008 *The Peace: A history in photographs*
Donald A. Pettit, Peace Photographics Inc.
2008 *Dawson Creek: An illustrated history 1958 - 2008*
Gerald R. Clare, Peace Photographics Inc.
2004 *Muskwa-Kechika: The wild heart of Canada's Northern Rockies*
Wayne Sawchuk, Northern Images
2001 *The Peace*
Donald A. Pettit, Peace Photographics Inc.

EDUCATION

- 1978 - 1980 Emily Carr College of Art and Design
1971 - 1973 Capilano College, Media Arts

Artist in Residence Program (AIR)

The Peace Liard Regional Arts Council (PLRAC) and the Dawson Creek Art Gallery would like to congratulate Barbara Swail for having been selected as a mentorship artist in 2019. We are honoured to present Barbara's newly created exhibition *SOLASTALGIA* in the Dawson Creek Art Gallery in 2020.

The AIR program, administered by the PLRAC with support from the BC Arts Council, provides a northeast BC artist with concentrated time to work on their art in a studio setting along with mentorship from a professional artist/curator culminating in a solo exhibition. This year, there was an opportunity to include two artists selected for mentorship and exhibition. The program, which the PLRAC hopes will become an annual opportunity, was developed to assist the region's artists in gaining time for their practice as well as furthering their exposure and professional status.

The 2019 submissions to the Artist in Residence program were adjudicated by Paul Crawford, curator of the Penticton Art Gallery, and nationally renowned artist Peter von Tiesenhausen from Demmit, Alberta.

Paul also participated as a mentor during the creative process generously offering to share his experience and expertise with our local artists and arts organizations.



Untitled
Mixed media on paper
2020